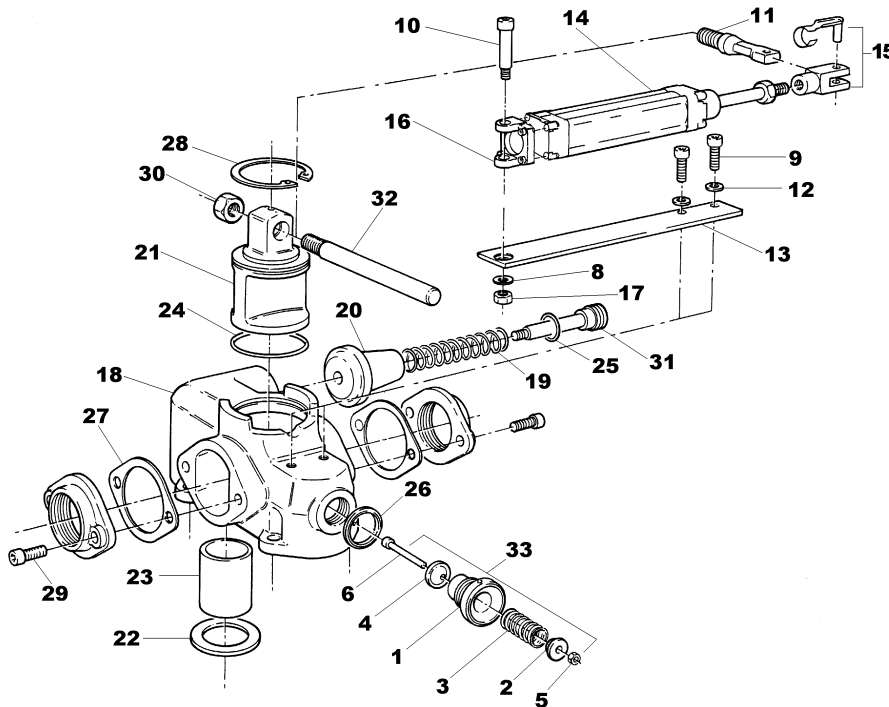


PARTS LIST	031.158
ISSUE	0
EFFECTIVE	AUGUST 2000
REPLACES	005.003 Issue 8
SECTION	4
RAL 485	

PARTS LIST - COMBINED REVERSE FLOW VALVE
Model: RAL 485



PARTS LIST							
SNIFTER VALVE ASSEMBLY (201.178)							
Item	Part No.	Description	Qty	Item	Part No.	Description	Qty
1	007.055	Valve Body	1	5	024.188	Lock Nut M6	1
2	009.034	Spring Cap	1	6	024.119	Cap Screw M6 x 70 Long	1
3	010.006	Spring	1	7	037.121	Warning Label (not shown)	1
4	014.028	Valve	1				
AIR KIT ASSEMBLY (204.516)							
8	023.027	Plain Washer M8	1	13	041.117	Bracket	1
9	024.037	Cap Screw M10 x 20	2	14	046.037	Air Cylinder	1
10	024.166	Shoulder Screw M8 x 45 Long	1	15	046.039	Clevis	1
11	035.015	Handle (Air Operated)	1	16	046.040	Trunion	1
12	023.017	Spring Washer M10	2	17	024.081	Locknut M8	1
COMBINATION REVERSE FLOW VALVE ASSEMBLY (204.515)							
18	007.112	Valve Body	1	27	021.045	Gasket	2
19	010.022	Pressure Relief Valve Spring (1.0 bar)	1	28	023.005	Circlip	1
20	014.064	Pressure Relief Valve	1	29	024.009	Cap Screw M10 x 25	4
21	014.045	Reverse Flow Valve	1	30	024.022	Nut M16	1
22	037.117	Check Valve Seat	1	31	024.180	Relief Valve Shoulder Screw M10	1
23	014.047	Check Valve	1	32	035.003	Handle (Manually Operated)	1
24	018.005	"O" Ring Seal	1	33	201.178	Snifter Valve Assembly	1
25	018.101	"O" Ring Seal	1	Not Shown	009.046	Plastic Bungs To Suit M10 Holes	2
26	018.034	1" Dowty Seal	1				