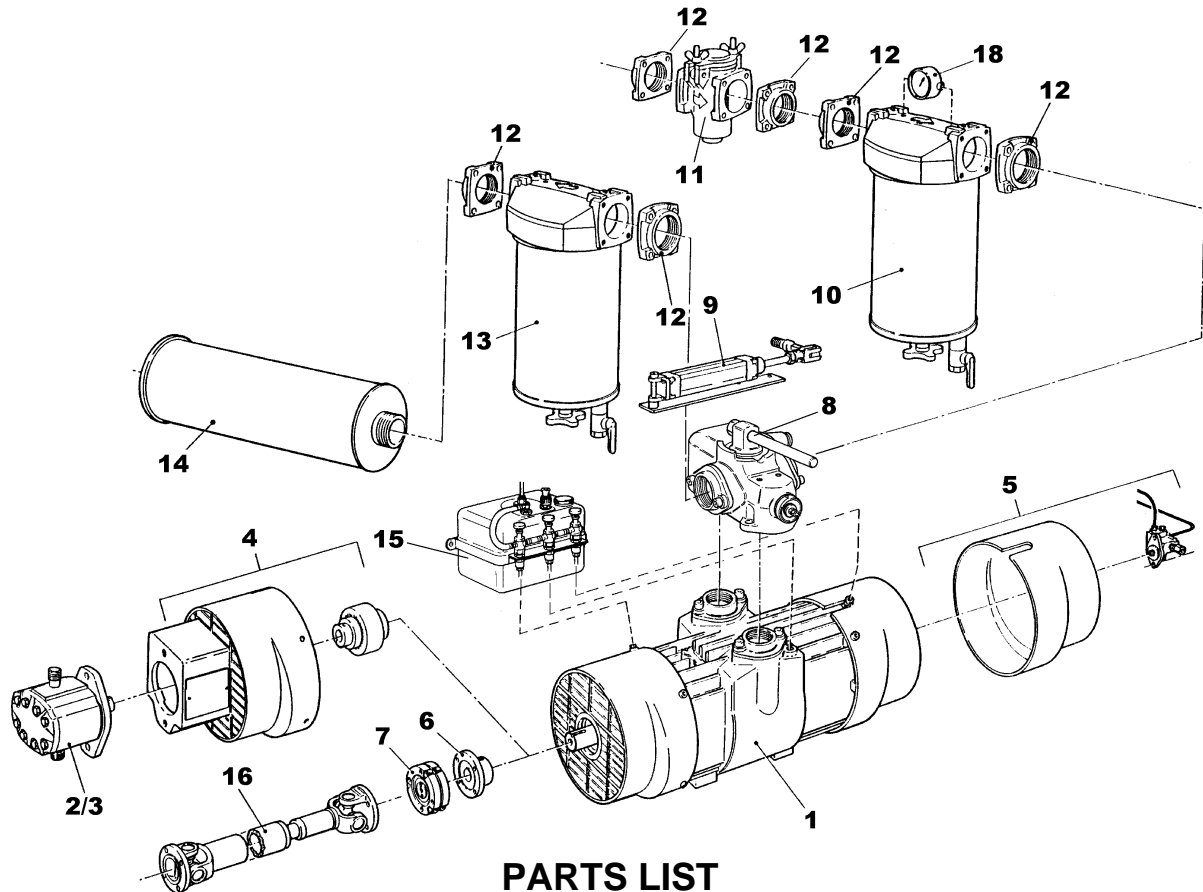


PARTS LIST - Ancillaries
Model: RAL 485

PARTS LIST	031.159
ISSUE	0
EFFECTIVE	AUGUST 2000
REPLACES	005.003 Issue 8
SECTION	4
RAL 485	



PARTS LIST

Item	Part	Description	Item	Part	Description
1	204.522	485 Vacuum Pump	12	056.027	Flange - 2" N.B. Mild Steel Weld-in
2	209.511	Hyd. Motor SAE B 2 bolt Flange: Ø24 mm		056.019	Flange - 2"BSP Female Cast Iron
3	209.509	Hyd. Pump - 23 cc/rev.:4 bolt Flange : Ø16		056.009	Flange - 2 1/2"BSP Female Cast Iron
4	204.504	Hyd. Motor Drive Kit SAE B 2 bolt : Ø24 mm		056.015	Flange - 2 1/2" BSP Female Aluminium
	204.509	Hyd. Pump Drive Kit 23 cc/rev.:4 bolt:		056.026	Flange - 2 1/2" Mild Steel Weld-in
5	204.510	Lubrication Oil Pump and Drive Kit		056.018	Flange 2 1/2" NPT Cast Iron
6	204.274	1100 Series Drive Flange	13	216.517	Oil Coalescing Filter No. 2
	204.276	1300 Series Drive Flange		216.519	Oil Coalescing Filter No. 2 PFA Coated
7	222.502	1100 Series Coupling Shear Spacer		216.516	Coalescing Filter No. 3
	222.503	1300 Series Coupling Shear Spacer		216.516	Oil Coalescing Filter No. 3 PFA Coated
8	204.515	Combination Reverse Flow Valve	14	045.037	Silencer 2" BSPT Male - use 2 in series
9	204.516	Reverse Flow Valve Air Actuator	15	214.506	5 Litre Standard Oil Tank 3 lub.
10	216.500	Suction Line Filter No.2 : 80 µm		214.503	5 Litre Pressure Reg. Oil Tank 3 lub.
	216.501	Suction Line Filter No.3 : 80 µm		214.382	5 Litre Oil Tank For Oil Pump.
	216.512	Suction Line Filter No.2 : 80 µm : PFA	16	012.024	1100 Prop Shaft
	216.513	Suction Line Filter No.3 : 80 µm : PFA		012.025	1300 Prop Shaft
11	220.143	Strainer - 1mm (supplied without flanges)	not shown	220.507	Automatic Speed Control Air Kit
			18	216.506	Differential Pressure Gauge