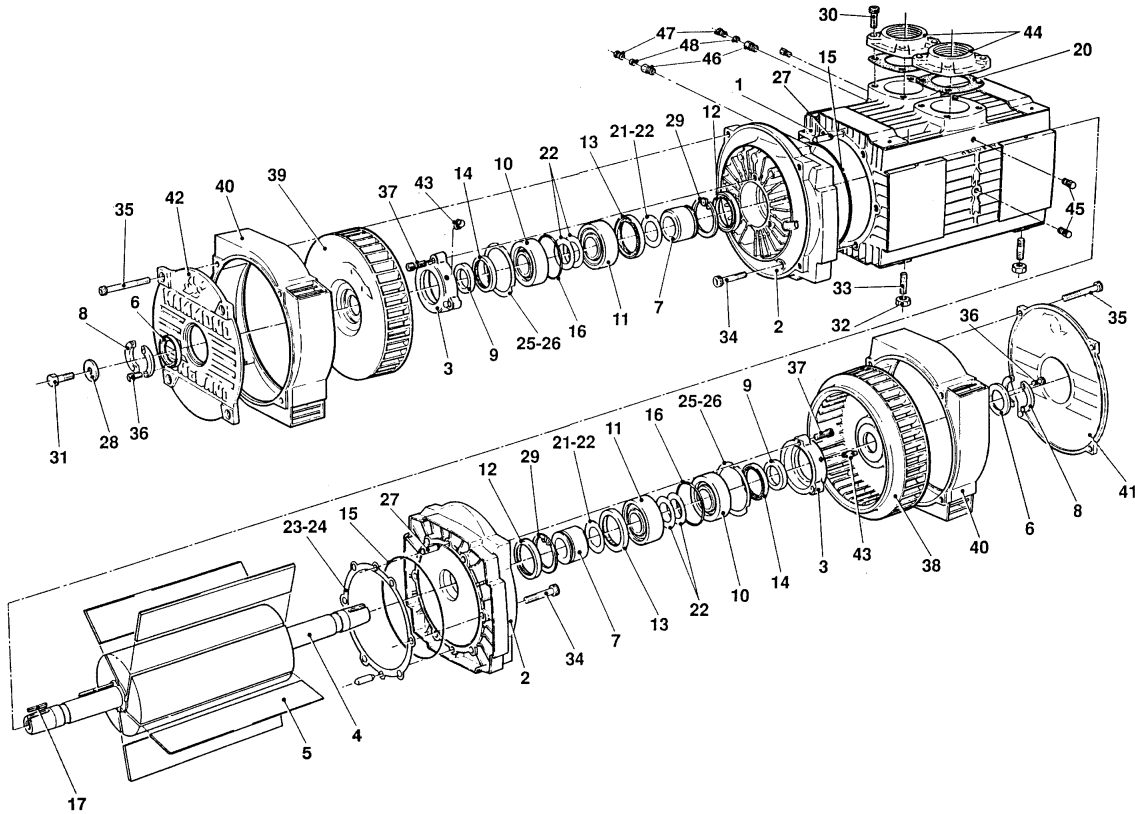


PARTS LIST	031.077
ISSUE	0
EFFECTIVE	AUGUST 2000
REPLACES	005.022 Issue 3
SECTION	6
CHALLENGER 355, 505 & 998	

**blackmer**  
PEOPLE PROVIDING FLOW TECHNOLOGY WORLDWIDE

## PARTS LIST

Model: Challenger 355, 505 & 998



Item	Part No.	Description	Qty	Item	Part No.	Description	Qty
1	212.517	C355 Body - Plated Cast Iron	1	25	021.025	Bearing Cap Shim (2/1000" or 0.05	a/r
	212.520	C505 / 998 Body - Plated Cast Iron	1	26	021.026	Bearing Cap Shim (5/1000" or 0.125	a/r
2	008.008	355 / 505 Side Plate	2	27	022.004	Dowel Pin	4
	008.013	998 Side Plate	2	28	023.016	Washer	1
3	009.042	Bearing Cap	2	29	023.041	Circlip	2
4	011.047	355 Rotor	1	30	024.009	Cap Screw M10 x 25 Long	8
	011.046	505 Rotor	1	31	024.025	Hex. Head Set Screw M12 x 25 Long	1
	011.048	998 Rotor	1	32	024.031	Stud M12 x 30 x 18	4
5	013.061	355 Blade	5	33	024.032	M12 Nut	4
	013.062	505 Blade	5	34	024.059	Cap Screw M10 x 70 Long	12
	013.062	998 Blade	4	35	024.060	Cap Screw M10 x 100 Long	8
6	016.028	Thrust Sleeve	2	36	024.061	Cap Screw M8 x 20	8
7	016.043	Distance Sleeve	2	37	024.131	Cap Screw M10 x 35	6
8	016.044	Split Sleeve	2	38	025.007	Clockwise Fan	1
9	016.073	Fan Sleeve	2	39	025.008	Anti-clockwise Fan	1
10	017.005	Bearing (Angular Contact)	2	40	026.004	Cowl	2
11	017.009	Bearing - Roller Type	2	41	029.007	Non Drive-End Cover	1
12	018.027	Wiper seal	2	42	029.008	Drive-End Cover	1
13	018.028	Side Plate Oil Seal	2	43	055.014	Grease Nipple	2
14	018.065	Bearing Cap Oil seal	2	44	056.009	Flange 2 1/2" BSP	2
15	018.071	Side Plate "O" Seal	2	46	055.012	Fitting 1/4"BSP to 5/16" Adapter	2
16	018.082	Bearing Cap "O" Seal	2	47	055.010	Fitting 1/4"BSP to 5/16" Tube Nut	2
17	020.007	Shaft Key	1	48	055.008	Fitting 5/16" Olive	2
20	021.052	Flange Gasket - Asbestos Free	2				
21	021.017	Shaft Shim (2/1000" or 0.05 mm)	a/r			Assembly Part Nos	
22	021.018	Shaft Shim (5/1000" or 0.125 mm)	4		211.500	Sideplate 355 / 505	2
23	021.023	Body Shim (2/1000" or 0.05 mm)	a/r		211.501	Sideplate 998	2
24	021.024	Body Shim (5/1000" or 0.125 mm)	a/r		207.107	Stud Kit	1